

Package leaflet: Information for the patient

FOSTER<sup>®</sup> NEXThaler<sup>®</sup>

100 micrograms/6 Micrograms per dose inhalation powder

For use in adults

beclometasone dipropionate anhydrous/formoterol fumarate dihydrate

Read all of this leaflet carefully before you start taking this medicine because it contains important information for you.

- Keep this leaflet. You may need to read it again.
- If you have any further questions, ask your doctor, nurse or pharmacist.
- This medicine has been prescribed for you only. Do not pass it on to others. It may harm them, even if their signs of illness are the same as yours.
- If you get any side effects, talk to your doctor, nurse or pharmacist. This includes any possible side effects not listed in this leaflet.

What is in this leaflet

1. What Foster Nexthaler is and what it is used for
2. What you need to know before you use Foster Nexthaler
3. How to use Foster Nexthaler
4. Possible side effects
5. How to store Foster Nexthaler
6. Contents of the pack and other information

1. What Foster Nexthaler is and what it is used for

Foster Nexthaler is a powder that is inhaled through your mouth and delivered deeply into your lungs. It contains two active ingredients: beclometasone dipropionate anhydrous and formoterol fumarate dihydrate.

- Beclometasone dipropionate anhydrous belongs to a group of medicines commonly referred to as steroids (technically corticosteroids). Steroids both treat and prevent symptoms of asthma. They reduce the inflammation, swelling and irritation in the small air passages of the lungs.
- Formoterol fumarate dihydrate belongs to a group of medicines called long-acting bronchodilators. These relax the muscles in your airways, widening the airways so that it is easier for you to breathe air in and out of your lungs.

These two active substances make breathing easier by providing relief from symptoms such as shortness of breath, wheezing and coughing in patients with asthma or COPD and also help to prevent asthma symptoms.

Asthma

Foster Nexthaler is used to treat asthma in adults.

If you are prescribed Foster Nexthaler it is likely that either:

- Your asthma is not adequately controlled by using inhaled corticosteroids and “as needed” short-acting bronchodilators

or

- Your asthma is responding well to both corticosteroids and long-acting bronchodilators.

COPD

Foster Nexthaler can also be used to treat the symptoms of severe chronic obstructive pulmonary disease (COPD) in adult patients. COPD is a long term disease of the airways in the lungs which is primarily caused by cigarette smoking.

2. What you need to know before you use Foster Nexthaler

Do not use Foster Nexthaler

If you are allergic to beclometasone dipropionate anhydrous or formoterol fumarate dihydrate or any of the other ingredients of this medicine (listed in section 6).

Warnings and precautions

Do not use this medicine if you are experiencing acute asthma symptoms such as shortness of breath, wheezing and cough, your asthma is getting worse or you are having an acute asthma attack. To relieve your symptoms you should use your quick-acting “reliever” inhaler which you should carry with you at all times.

Talk to your doctor before using Foster Nexthaler if you have any of the following:

- heart problems, these include any known disorder of your heart and/or heart function
- disorders of the heart rhythm such as increased or irregular heart rate, a fast pulse rate or palpitations, or if you have been told that your heart trace is abnormal
- high blood pressure
- narrowing of the arteries (also known as arteriosclerosis), or if you know that you have an aneurysm (an abnormal bulging of the blood vessel wall)
- an overactive thyroid gland
- low blood levels of potassium
- any disease of your liver or kidneys
- diabetes. If you inhale high doses of formoterol your blood glucose may increase and therefore you may need to have some additional blood tests to check your blood sugar when you start using this inhaler and from time to time during treatment.
- tumour of the adrenal gland (known as a pheochromocytoma)
- you are due to have an anaesthetic. Depending on the type of anaesthetic, it may be necessary to stop taking Foster Nexthaler at least 12 hours before the anaesthesia.
- you are being, or have ever been, treated for tuberculosis (TB) or if you have a known viral or fungal infection of your chest.

If any of the above applies to you, always inform your doctor before you use Foster Nexthaler.

If you are not sure whether you can use Foster Nexthaler talk to your doctor, asthma nurse or pharmacist before using the inhaler.

Your doctor may wish to measure the potassium levels in your blood from time to time especially if your asthma is severe. Like many bronchodilators Foster Nexthaler can cause a sharp fall in your serum potassium level (hypokalaemia). This is because a lack of oxygen in the blood combined with some other treatments you may be taking together with Foster Nexthaler can make the fall in potassium level worse.

If you are using an inhaler to take high doses of corticosteroids over a long period of time, you may have more of a need for corticosteroids in situations of stress. Stressful situations might include being taken to hospital after an accident, having a serious injury, or before an operation. In this case, the doctor treating you will decide whether you may need to increase your dose of corticosteroids and may prescribe some steroid tablets or a steroid injection.

Should you need to go to the hospital, remember to take all of your medicines and inhalers with you, including Foster Nexthaler and any medicines or tablets bought without a prescription, in their original package, if possible.

Children and adolescents

Do not give this medicine to children and adolescents aged less than 18 years.

Other medicines and Foster Nexthaler

Before starting treatment, please tell your doctor or pharmacist if you are taking or have recently taken any other medicines, including any other inhalers and including medicines obtained without a prescription. This is because Foster Nexthaler may affect the way some other medicines work. Also, some medicines can affect the way Foster Nexthaler works. Some medicines may increase the effects of Foster Nexthaler and your doctor may wish to monitor you carefully if you are taking these medicines (including some medicines for HIV: ritonavir, cobicistat).

Do not use beta blockers with this medicine. Beta blockers are medicines used to treat many conditions including heart problems, high blood pressure or glaucoma (increased pressure in the eyes). If you need to use beta blockers (including eye-drops), the effect of formoterol may be reduced or formoterol may not work at all.

Using Foster Nexthaler when you are taking the following medicines:

• other drugs which work in the same way as formoterol (i.e. beta adrenergic drugs, commonly used to treat asthma)	→ can increase the effects of formoterol.
• quinidine, disopyramide, procainamide (to treat abnormal heart rhythms)	→ can cause changes in the electrocardiogram (ECG, heart trace). They may also increase the risk of disturbances of heart rhythm (ventricular arrhythmias).
• some antihistamines for example terfenadine (to treat allergic reactions)	
• monoamine oxidase inhibitors or tricyclic antidepressants for example phenelzine, isocarboxazid, amitriptyline and imipramine; phenothiazines (to treat depression or mental disorders)	
• L-dopa (to treat Parkinson's Disease)	→ can lower your heart's tolerance to beta adrenergic drugs, such as formoterol.
• L-thyroxine (to treat an underactive thyroid gland)	
• medicines containing oxytocin (which causes uterine contraction)	
• monoamine oxidase inhibitors (MAOIs) (to treat mental disorders), including drugs with similar properties like furazolidone and procarbazine	→ can cause a rise in blood pressure.
• digoxin (to treat heart disease)	→ can cause a fall in your blood potassium level. This may increase the likelihood of abnormal heart rhythms.
• other medicines to treat asthma (theophylline, aminophylline or steroids)	→ can cause a fall in your potassium level.
• diuretics (water tablets)	
• some anaesthetics	→ can increase the risk of abnormal heart rhythms.

Foster Nexthaler with alcohol

You should avoid drinking alcohol unless you have talked to your doctor first. Alcohol can lower your heart's tolerance to one of the active ingredients of Foster Nexthaler, formoterol.

Pregnancy and breast feeding

There is no clinical data on the use of Foster Nexthaler during pregnancy.

If you think you are pregnant or are planning to become pregnant please consult your doctor. You should only use Foster Nexthaler during pregnancy if you are advised to do so by your doctor. Your doctor will decide whether you must stop taking Foster Nexthaler during breastfeeding or you should take Foster Nexthaler but refrain from breastfeeding. Always follow the advice of your doctor strictly.

Driving and using machines

Foster Nexthaler is unlikely to affect your ability to drive and use machines. However if you experience side effects such as dizziness and/or trembling, your ability to drive or operate machinery may be affected.

Foster Nexthaler contains lactose monohydrate.

The excipient lactose monohydrate contains small amounts of milk proteins, which may cause reactions in allergic patients.

3. How to use Foster Nexthaler

Always use Foster Nexthaler exactly as your doctor has told you. You should check with your doctor, nurse or pharmacist if you are not sure.

Foster Nexthaler delivers an extrafine aerosol which results in more of each dose being delivered to your lungs. Your doctor may, therefore, prescribe a lower dose of this inhaler than your previous inhalers.

Asthma

Your doctor will give you a regular check-up to make sure you are taking the correct dose of Foster Nexthaler. Once your asthma is well controlled your doctor may consider it appropriate to gradually reduce the dose of Foster Nexthaler. Under no circumstances should you change the dose without first speaking to your doctor.

How much Foster Nexthaler to use:

Adults and the elderly:

The recommended dose of this medicine is 1 or 2 inhalations twice daily.

The maximum daily dose is 4 inhalations.

Do not increase the dose.

If you feel that the medicine is not effective, always talk to your doctor before increasing the dose.

Chronic obstructive pulmonary disease (COPD)

Adults and the elderly:

The recommended dose is two puffs in the morning and two puffs in the evening.

Remember: you should always have your quick-acting “reliever” inhaler with you at all times to treat worsening symptoms of asthma or a sudden asthma attack.

How to use Foster Nexthaler:

Foster Nexthaler is for inhalation use.

In this pack, you will find in a sealed protective pouch an inhaler called Nexthaler that contains your medicine in the form of a powder. The Nexthaler inhaler enables you to inhale your medicine.

Please read the instructions at the end of this leaflet for more information about how to use and clean the Nexthaler inhaler.

Whenever possible, stand or sit in an upright position when inhaling.

If you have used more Foster Nexthaler than you should:

- contact your doctor or nearest hospital casualty department immediately for advice. Take your medicine with you so that the people can see what you have taken;
- side effects may occur. Tell your doctor if you have any unusual symptoms as he/she may wish to carry out further tests or decide about any measures that may be necessary.

If you forget to use Foster Nexthaler:

Take it as soon as you remember. If it is almost time for your next dose, do not take the dose you have missed, just take the next dose at the correct time. Do not double the dose.

If you stop using Foster Nexthaler:

Even if you are feeling better, do not stop using Foster Nexthaler or lower the dose. If you want to do this, talk to your doctor. It is very important for you to use Foster Nexthaler every day as prescribed by your doctor even though you may have no symptoms.

If your breathing does not change:

If your symptoms do not improve after inhaling Foster Nexthaler, you may be using it incorrectly. Therefore check the instructions for correct use at the end of this leaflet and/or contact your doctor or nurse to be trained properly again.

If your asthma gets worse:

If your symptoms get worse or are difficult to control (e.g. if you are using your “reliever” inhaler more frequently) or if your “reliever” inhaler does not improve your symptoms, you should continue to use Foster Nexthaler but go to see your doctor as soon as possible. Your doctor may need to change your dose of Foster Nexthaler or prescribe an additional or alternative treatment.

If you have any further questions on the use of this product, ask your doctor or pharmacist.

4. Possible side effects

Like all medicines, this medicine can cause side effects, although not everybody gets them.

As with other inhaler treatments there is a risk of worsening shortness of breath, cough and wheezing immediately after using Foster Nexthaler and this is known as paradoxical bronchospasm. If this occurs you should STOP using Foster Nexthaler immediately and use your quick-acting “reliever” inhaler straightaway to treat the symptoms. You should contact your doctor straightaway.

Tell your doctor immediately if you experience allergic reactions which include skin allergies, skin itching, skin rash, reddening of the skin, swelling of the skin or of mucous membranes especially of the eyes, face, lips and throat.

Other possible side effects of Foster Nexthaler are listed below according to their frequency.

You should contact your doctor or pharmacist immediately:

- if you experience any of the side effects below and they cause you distress, are severe or last for several days
- if you are worried in any way or if there is anything you do not understand.

Your doctor is likely to assess your asthma and if necessary start you on another course of treatment. You may be told that you should not use Foster Nexthaler again.

Common (may affect up to 1 in 10 people):

- trembling,
- Pneumonia (infection of the lung) in COPD patients

Tell your doctor if you have any of the following while taking Foster Nexthaler they could be symptoms of a lung infection:

- fever or chills
- increased mucus production, change in mucus colour
- increased cough or increased breathing difficulties

Uncommon (may affect up to 1 in 100 people):

- cold-like symptoms, sore throat
- fungal infections (of the mouth and throat). Rinsing your mouth or gargling with water and brushing your teeth immediately after inhalation may help to prevent these side effects
- worsening of your asthma symptoms, difficulty breathing
- hoarseness
- cough
- unusually fast heart beat
- unusually slow heart beat
- crushing chest pain
- headache
- feeling sick
- feeling tired or nervous
- changes in the electrocardiogram (ECG)
- low level of cortisol in your urine or in your blood
- high level of potassium in your blood
- high level of glucose in your blood
- high level of fats in your blood.

Side effects which have been observed with similar medicines for inhalation containing beclometasone dipropionate and/or formoterol are:

- palpitations
- uneven heart beat
- abnormal or impaired sense of taste
- muscle pain and muscle cramps
- restlessness, dizziness
- feeling anxious
- sleep disorders
- a fall in the level of potassium in the blood
- increase/decrease of blood pressure.

Using high-dose inhaled corticosteroids over a long time can cause systemic effects these include:

- problems with how your adrenal glands work (adrenosuppression)
- thinning of the bones
- growth retardation in children and adolescents
- increased pressure in your eyes (called glaucoma), cataracts
- rapid weight gain, particularly of the face and torso
- sleeping problems, depression or feeling worried, restless, nervous, over-excited or irritable. These effects are more likely to occur in children.
- abnormal behaviour.

Reporting of side effects

If you get any side effects, talk to your doctor, pharmacist or nurse. This includes any possible side effects not listed in this leaflet.

You can also report side effects directly via the national reporting system. By reporting side effects you can help provide more information on the safety of this medicine.

5. How to store Foster Nexthaler

Keep this medicine out of the sight and reach of children.

Do not use this medicine after the expiry date which is stated on the carton, pouch and label after Exp. The expiry date refers to the last day of that month.

Store in the original package in order to protect from moisture. Only remove the inhaler from its pouch immediately before first use.

Before first opening the pouch:

This medicinal product does not require any special temperature storage conditions.

After first opening the pouch:

Do not store above 30°C.

After first opening the pouch, the medicinal product should be used within 2 months.

Use the label on the box to write down the date you open the pouch.

Do not throw away any medicines via wastewater or household waste. Ask your pharmacist how to throw away medicines you no longer use. These measures will help to protect the environment.

Please read the instructions at the end of this leaflet for more information about how to store the Nexthaler inhaler.

6. Contents of the pack and other information

What Foster Nexthaler contains

The active substances are: beclometasone dipropionate anhydrous and formoterol fumarate dihydrate.

Each metered dose contains 100 micrograms of beclometasone dipropionate anhydrous and 6 micrograms of formoterol fumarate dihydrate. This corresponds to a delivered dose from the mouthpiece of 81.9 micrograms of beclometasone dipropionate anhydrous and 5 micrograms of formoterol fumarate dihydrate.

The other ingredients are: lactose monohydrate (which contains small amounts of milk proteins) and magnesium stearate.

What Foster Nexthaler looks like and contents of the pack

This medicinal product is presented as a white to almost white inhalation powder contained in a plastic inhaler called Nexthaler.

Each pack contains one, two or three inhalers which provide 120 inhalations each.

Each inhaler comes in a sealed protective pouch (aluminium foil package).

Not all pack sizes may be marketed.

Marketing Authorisation Holder and Manufacturer

Marketing Authorisation Holder:

Chiesi Farmaceutici S.p.A.

Via Palermo 26/A

43122 Parma - Italy

Manufacturer responsible for batch release:

Chiesi Farmaceutici S.p.A.

Via San Leonardo 96

43122 Parma - Italy

This leaflet was last revised in 12/2017

INSTRUCTIONS FOR USE OF NEXTHALER INHALER

Please read all of the following instructions before you start using this inhaler.

If you experience any problems using this inhaler, please contact your doctor, nurse or pharmacist.

A. Contents of the Package

This package contains:

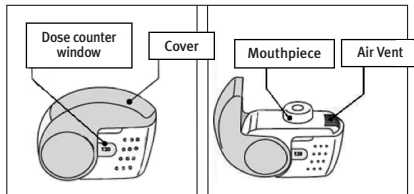
- 1 instruction leaflet
- 1 Nexthaler inhaler inside the sealed protective pouch.
- If the package contents are not the same as this, return your inhaler to the person who supplied it (e.g. pharmacist or doctor) and get a new one.

B. General Warnings & Precautions

- Do not remove the inhaler from the pouch if you do not intend to use it immediately.
- Only use your inhaler as indicated.
- If you are not sure you are receiving your dose correctly contact your pharmacist or doctor.
- If you are not sure the dose counter has gone down by one after inhalation, wait until your next scheduled dose and take this as normal. Do not take an extra dose.
- Keep the cover closed until you need to take a dose from your inhaler.
- When you are not using your inhaler keep it in a clean and dry place.
- Do not attempt to take your Nexthaler inhaler apart for any reason.
- Do not use your Nexthaler inhaler:
  - o after its expiry date
  - o if it is more than 2 months since you opened the pouch
  - o if it is broken
  - o if the dose counter window shows “o”
  - o if you cannot read the dose counter window.

In these cases, dispose of your inhaler, or return it to the person who supplied it, and get a new one. Ask your pharmacist how to dispose of inhalers no longer required.

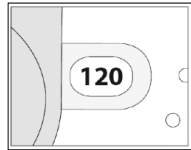
C. Key features of your Nexthaler inhaler



Taking a dose from your Nexthaler inhaler requires just three simple steps: Open, Inhale, Close.

D. Before using a new Nexthaler inhaler

1. Open the pouch and take out your inhaler.
  - o Do not use your inhaler if the pouch is not sealed or it is damaged – return it to the person who supplied it and get a new one.
2. Inspect your inhaler.
  - o If your inhaler looks broken or damaged, return it to the person who supplied it and get a new one.
3. Check the Dose Counter Window. If your inhaler is brand new you will see “120” in the Dose Counter Window.
  - o Do not use a new inhaler if the number shown is less than “120” – return it to the person who supplied it and get a new one.



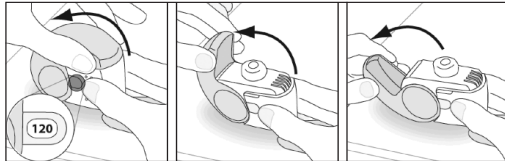
E. How to use your Nexthaler inhaler

E.1. Visual Check

1. Check the number of doses left: any number between “4” and “120” shows that there are doses left.
  - o If the Dose Counter Window shows “o” there are no doses left – dispose of your inhaler and get a new one.
2. Make sure the cover is fully closed before you use it.

E.2. Open

1. Hold your inhaler firmly in the upright position.
2. Open the cover fully.



3. Before inhaling breathe out as far as is comfortable.
  - o Do not breathe out through your inhaler.

E.3. Inhale

Whenever possible, stand or sit in an upright position when inhaling.

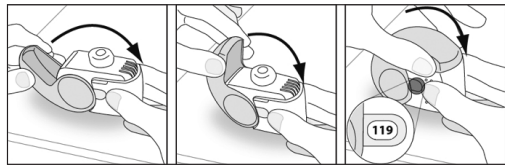
1. Lift your inhaler up, bring it to your mouth and place your lips around the mouthpiece.
  - o Do not cover the air vent when holding your inhaler.
  - o Do not inhale through the air vent.
2. Take a quick and deep breath through your mouth.
  - o You may notice a taste when you take your dose.
  - o You may hear or feel a click when you take your dose.
  - o Do not inhale through your nose.
  - o Do not remove your inhaler from your lips during the inhalation.



3. Remove your inhaler from your mouth.
4. Hold your breath for 5 to 10 seconds or as long as is comfortable.
5. Breathe out slowly.
  - o Do not breathe out through your inhaler.

E.4. Close

1. Move your inhaler back to the upright position and close the cover fully.
2. Check that the dose counter has gone down by one.



3. If you need to take another dose, repeat steps E.1 to E.4.

F. Cleaning

- Normally, it is not necessary to clean your inhaler.
- If necessary you may clean your inhaler after use with a dry cloth or tissue.
  - o Do not clean your inhaler with water or other liquids. Keep it dry.

G. Storage

- When you are not using your inhaler keep it in a clean dry place. You may put it back in the pouch after use.
  - o Do not expose your inhaler to heat or direct sunlight.
  - o Do not expose your inhaler to a humid or wet environment.
- Keep out of the sight and reach of children.
- If your inhaler has been stored for over 2 months since you opened the pouch, dispose of it and get a new one.

H. Disposal

- Dispose of your Nexthaler inhaler if the number shown in the dose counter window is “o”.
- Ask your pharmacist what to do with medicines you have finished or do not need.
  - o Do not dispose of medicines with your regular household waste.

Chiesi

018006254/01



## فوسٹرنیکسٹ ہیلر 100/6 مائیکروگرام (آئیلیشن پاؤڈر)

ہیکلو میتھازون ڈائی پروپیونیٹ + فارموٹرول فیومریٹ ڈائی ہائیڈریٹ۔ سانس کے ذریعے استعمال کرنے والا پاؤڈر۔

اجزائے ترکیبی:

ہر کینسٹر (Canister) میں ہیکلو میتھازون ڈائی پروپیونیٹ اور فارموٹرول فیومریٹ ڈائی ہائیڈریٹ بطور عامل جو شامل ہیں۔ ہر کش (Puff) ہیکلو میتھازون ڈائی پروپیونیٹ 100 مائیکروگرام اور فارموٹرول فیومریٹ ڈائی ہائیڈریٹ 6 مائیکروگرام مہیا کرتا ہے۔ دوسرے اجزاء لیکو زمونو ہائیڈریٹ اور میکینیشیم سٹیرےٹ شامل ہیں۔ ایک آئیلر 120 کش (Puffs) مہیا کرتا ہے۔

علامات:

1 دمہ:

فوسٹرنیکسٹ ہیلر مستقل علاج کے طور پر دمہ کے ایسے مریضوں میں استعمال کیا جاتا ہے جن میں:

• آئیلڈ کورٹیکو سٹیرائیزز اور ضرورت محسوس ہونے پر شارٹ ایکٹنگ بروکوڈائلیٹرز (Short-Acting)

(Bronchodilators) سے دمہ کنٹرول نہ ہو رہا ہو۔

• کورٹیکو سٹیرائیزز اور لانگ ایکٹنگ بروکوڈائلیٹرز (Long-Acting Bronchodilators) سے دمہ کے

علاج میں بہتری ہو۔

2 دائمی رکاوٹ پلمونری مرض:

فوسٹرنیکسٹ ہیلر کو دائمی رکاوٹ پلمونری مرض کی علامات کے علاج کے لئے بھی استعمال کیا جاتا ہے۔

ممانعت برائے علاج:

دل کے امراض (انجینا وغیرہ) میں مبتلا مریض اور ایسے افراد جن کو ٹی بی یا سیدہ میں وائرل یا فنگل انفیکشن ہو۔ اس دوا میں موجود کسی جز سے الرجی (Allergy) ہو۔ حاملہ اور دودھ پلانے والی خواتین اپنے معالج کے مشورہ سے استعمال کریں۔

مقدار اور طریقہ استعمال:

فوسٹرنیکسٹ ہیلر کو ڈاکٹر کی ہدایت کے مطابق صرف آئیلر کے طور پر استعمال کریں۔

خوراک:

(i) دمہ: عمومی مقدار خوراک ایک سے دو کش (Puffs) دن میں دو مرتبہ۔ ایک دن میں زیادہ سے

زیادہ 4 کش (Puffs) استعمال کئے جاسکتے ہیں۔

(ii) دائمی رکاوٹ پلمونری مرض: تجویز کردہ خوراک دو (2) کش (Puffs) صبح اور دو (2) کش (Puffs) شام میں ہے۔

18 سال سے کم عمر مریضوں میں استعمال کی ممانعت ہے۔

طریقہ استعمال:

فوسٹرنیکسٹ ہیلر کو استعمال کرنا انتہائی آسان ہے

i۔ آئیلر کو کھولیں

ii۔ سانس کے ذریعے کھینچیں

iii۔ آئیلر کے ڈھکن کو بند کر دیں



استعمال سے پہلے مندرجہ ذیل ہدایات کو اچھی طرح پڑھ لیں

1۔ تھیلی (Pouch) کو کھولیں اور آئیلر کو باہر نکالیں

2۔ استعمال سے پہلے آئیلر پر خوراک کی مقدار کو نوٹ کریں۔ نئے آئیلر پر خوراک کی مقدار 120 نظر آنی چاہیے

3۔ اس بات کی تصدیق کریں کہ آئیلر کا ڈھکن پوری طرح سے بند ہو۔

4۔ آئیلر کو مضبوطی سے ہاتھ میں سیڈھی Position میں پکڑیں اور آئیلر کے ڈھکن کو کھولیں

5۔ استعمال سے پہلے سانس کو تھماتے حد تک باہر نکالیں

6۔ دم کش (Inhaler) کو سیدھا پکڑے ہوئے ہونٹوں کو اس کے گرد مضبوطی سے بھینچ لیں۔ Air Vent کے حصے پر ہاتھ نہ رکھیں

7۔ لمبا اور گہرا سانس منہ کے راستے اندر کھینچیں۔ اسی دوران سانس کو جتنی زیادہ دیر تک ممکن ہو روکے رکھیں۔

8۔ خوراک لینے کے بعد منہ میں ڈانقہ محسوس ہو سکتا ہے

9۔ کلک (Click) کی آواز اس بات کو ثابت کرے گی کہ ایک مکمل خوراک سانس کے ذریعے اندر جا چکی ہے

10۔ استعمال کے بعد منہ سے آئیلر کو نکالیں اور 5 سے 10 سیکنڈز کے لیے سانس کو روکیں

11۔ آئیلر کو بند کر دیں

12۔ آئیلر پر خوراک کی مقدار کی تصدیق کریں کہ یہ ایک درجہ کم ہو چکی ہے

13۔ اگر ایک سے زیادہ خوراک کی ضرورت ہو تو ہدایات نمبر 4 سے 12 تک دہرائیں

14۔ دم کش (Inhaler) کو کم از کم ہفتہ میں ایک دفعہ ضرور صاف کریں۔ صاف کرنے کیلئے آئیلر کا ڈھکن

کھولیں اور اس کو خشک اور صاف پکڑے سے صاف کر لیں۔ پانی یا کسی بھی قسم کے دوسرے لیکوڈ صفائی کیلئے استعمال نہ کریں۔

ڈاکٹر کی ہدایت کے مطابق صرف آئیلر کے طور پر استعمال کے لئے۔

دوا صرف مستند ڈاکٹر کے نسخہ پر ہی فروخت کی جائے۔

تمام ادویات بچوں کی پہنچ سے دور رکھیں۔

آئیلر کو استعمال کے بعد تھیلی میں محفوظ کر کے 30°C سینٹی گریڈ سے کم درجہ حرارت پر محفوظ رکھیں اور 2 ماہ کے اندر استعمال کریں